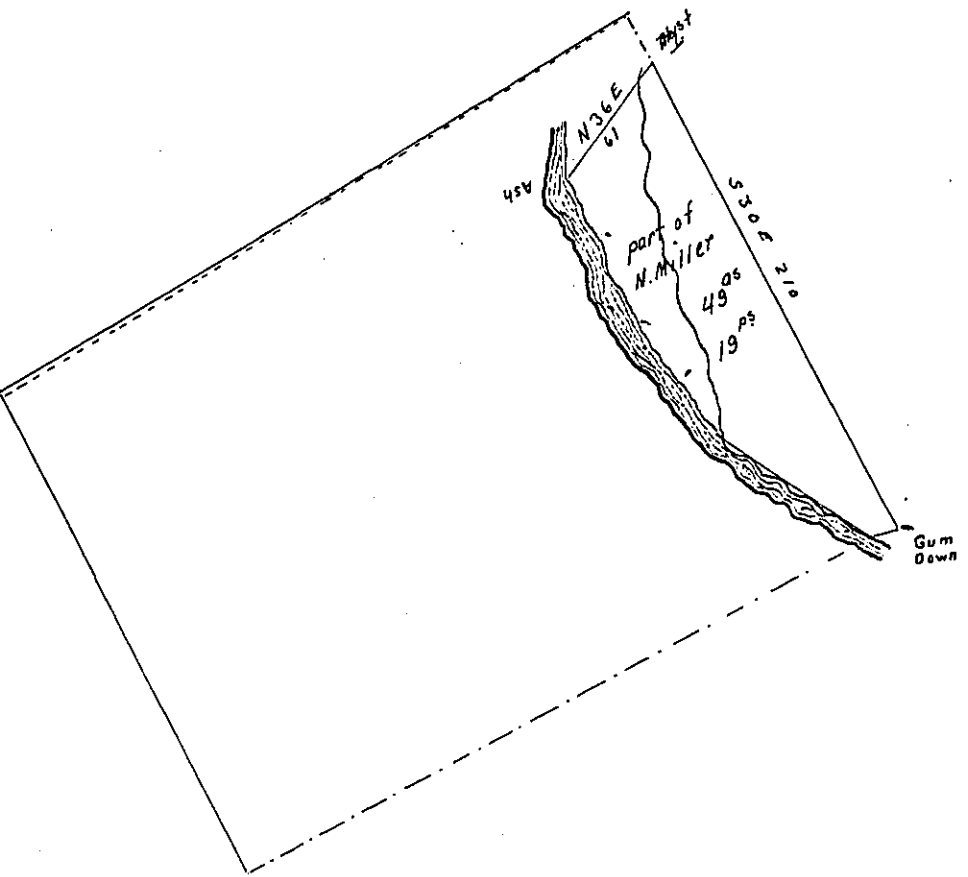


Up Laurel run
from the gum to
the Ash

S. 81 1/2 W	11.2
N. 58 3/4 W	72
N. 30 W	25
N. 50 W	32
N. 16 W	41.3
N. 53 W	25
	<u>206.5</u>



Situate in Antes late Allegheny township Huntingdon County first
Surveyed the year 1794. Containing four hundred thirty three acres
133 perches & Allowance in pursuance of a Warrant Granted to
Nicholas Miller Dated the first Day of February 1794. The above
piece Containing forty nine acres 19 perches and Allowance was
Survey'd off the Residue of the tract August 9th 1815.

Richard T. Leech Esqr. } In^o Morrison D.S.
Surveyor General

IN TESTIMONY that the above is a copy of the original remaining on file in
the Department of Internal Affairs of Pennsylvania, made
conformably to an Act of Assembly approved the 16th day of
February, 1833, I have hereunto set my Hand and caused
the Seal of said Department to be affixed at Harrisburg,
this twenty fourth day of February 1905.

George B. Purman
Secretary of Internal Affairs.